



CONDENSER REFURBISHMENT

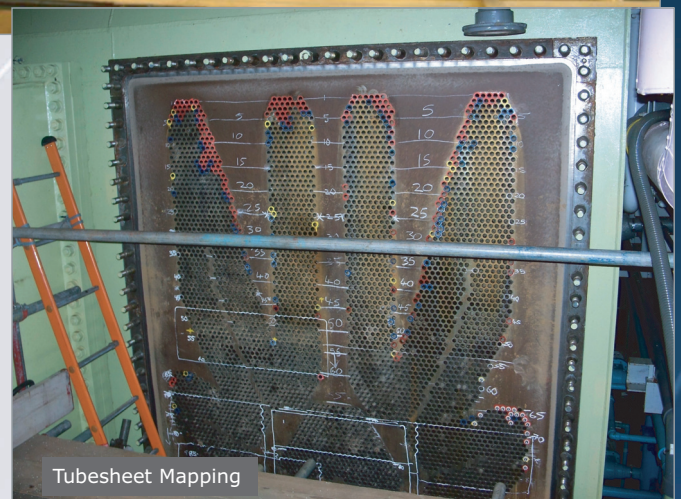
TEI YIMPACT were called in to two Power Stations in the second half of 2008 after both had experienced similar Turbine Blade failures.

“Both Projects were delivered in record time, in front of schedule.”

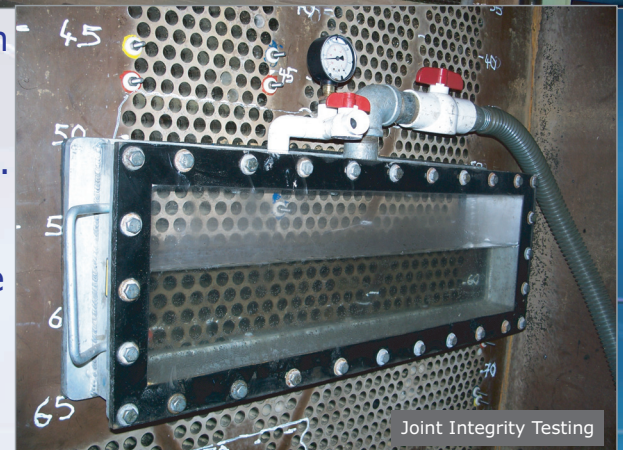
In August 2008, one of the UK's largest CCGT Power Stations lost a large portion of a steam turbine Last stage blade which entered the condenser causing significant damage to the condenser tubes.

The following month, a CCGT Power Station in the south of England suffered from a similar failure, albeit to a lesser degree.

In both instances, TEI YIMPACT were called in out subsequent repairs.



Tubesheet Mapping



Joint Integrity Testing

KEY ACTIVITIES

- Waterbox Removal/ Replacement
- 100% Tub Leaktightnesse testing
- 100% Eddy Current Inspection
- 100% Tube/Tubesheet Joint testing
- Damaged Tubes Removal/Replacement
- Tube Plugging
- Tubesheet Mapping

PO BOX 80 | CALDER VALE ROAD
WAKEFIELD | UK | WF15YS

TEL: +44 (0)1924 780000
FAX: +44 (0)1924 201901

enquiries@tei.co.uk
www.tei.co.uk

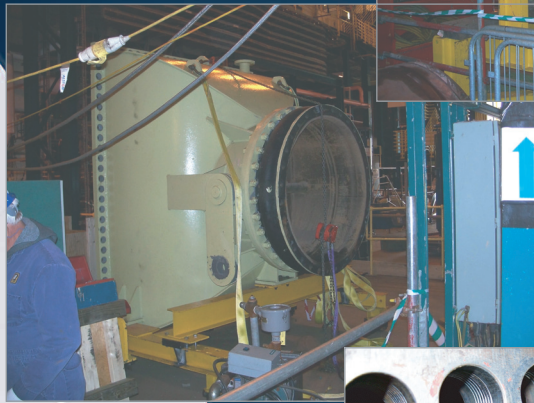


TEi YIMPACT CARRY OUT MAIN STEAM TURBINE CONDENSER REFURBISHMENT PROJECTS AT TWO OF THE LARGEST CCGT POWER STATIONS IN THE UK.

Statistics

- Inlet Waterbox Removed/
Replaced
- 100% Titanium Condenser Tubes
Inspected/ Tested (Eddy Current
and Tube leaktightness Tested)
- 100% Vacuum Testing of Tube to
Tubesheet Joints
- Damaged tubes removed/Replaced
(where access allowed)
- Non accessible Tubes plugged
- Total Project Duration 7 weeks
- Zero Accidents/Incidents

Waterbox and CW Pipe removal



Tubesheet Hole cleaning Before



After



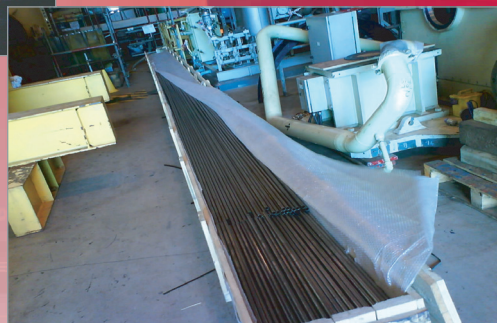
Inserting the Tubes



Tube expanding

Replacement Tube supply

- Tubes sourced in 5 days from
Mainland Europe
- Cut to size in UK



TEI's integrated

management system,

ISO 9001 ISO 14001

OHSAS 18001



**PO BOX 80 | CALDER VALE ROAD
WAKEFIELD | UK | WF15YS**

**TEL: +44 (0)1924 780000
FAX: +44 (0)1924 201901**

**enquiries@tei.co.uk
www.tei.co.uk**