



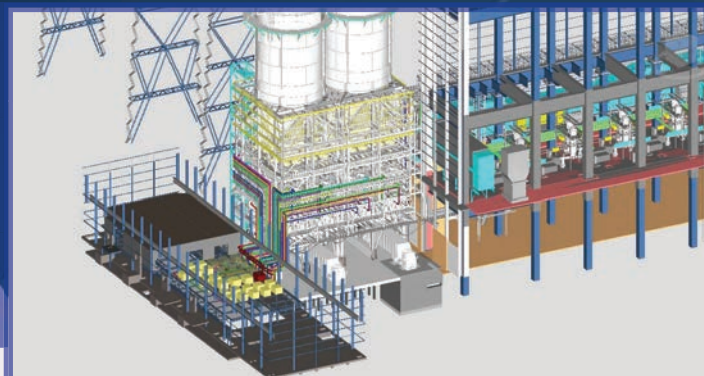
PO BOX 80 | CALDER VALE ROAD
WAKEFIELD | UK | WF1 5YS

TEL: +44 (0)1924 780000
FAX: +44 (0)1924 201901

techserv@tei.co.uk
www.tei.co.uk

DRAX BDS PROJECT

Drax Power Ltd commissioned Shepherd Construction Ltd to act as main contractor to convert three of its six 660MW coal fired boiler units at Drax Power Station near Selby. TEI were engaged by SCL to install the necessary process equipment and piping systems to enable 100% biomass firing.



The project required the following:

- Removal of the 30 existing coal feeders.
- Installation of 31 compressors to supply motive air to the fuel transport system, complete with stand by arrangement.
- Design, manufacture and installation of 2km of transport airpipe (150mm and 200mm nominal bore) from the compressors to the intermediate storage silo mixing chambers.
- The design included pressure containment calculations, a full flexibility study including 3D modelling of the system, along with design of the pipe support system to allow for the thermal and operational movements within the piping system.
- Installation of approx. 8km of product delivery pipework from the intermediate storage silos where it becomes entrained with the product which then delivers the biomass to the filter receiver units.
- Installation of the Filter receiver units at the feeder floor complete with all secondary steelwork, associated supports and vent pipework.



TEI's integrated management system,

Safety OHSAS 18001:2007

Environmental ISO 14001:2004

Quality ISO 9001:2008

